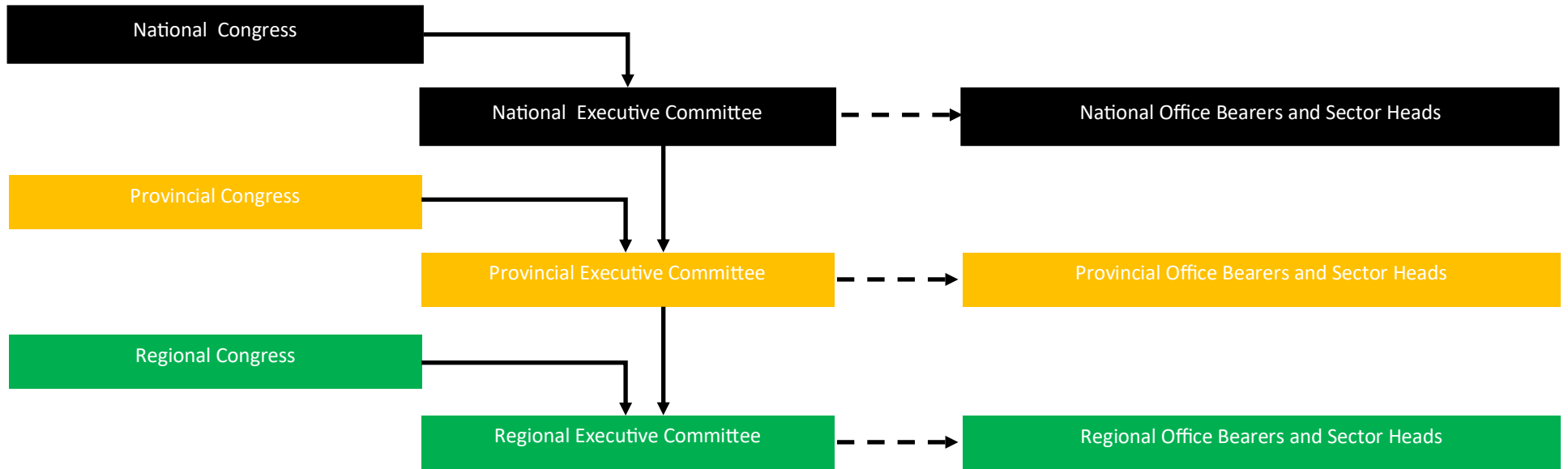


ANC Professionals League Organogram



Office Bearers

- President
- Secretary General
- Treasurer General
- Strategy & Organisational Development
- Programmes & Campaigns
- Communications & Stakeholder Engagement

Sector Heads

- Finance & Business Services
- Agriculture
- Manufacturing & Engineering
- Legal
- Mining & Maritime
- Healthcare
- Education & Skills Development
- Digital Economy

Office Bearers

- Provincial Chairperson
- Provincial Secretary
- Provincial Treasurer
- Programmes & Campaigns
- Communications & Stakeholder Engagement

Sector Heads

- Finance & Business Services
- Agriculture
- Manufacturing & Engineering
- Legal
- Mining & Maritime
- Healthcare
- Education & Skills Development
- Digital Economy
- Transport & Logistics

Office Bearers

- Regional Chairperson
- Regional Secretary
- Regional Treasurer
- Programmes & Campaigns
- Communications & Stakeholder Engagement

Sector Heads

- Finance & Business Services
- Agriculture
- Manufacturing & Engineering
- Legal
- Mining & Maritime
- Healthcare
- Education & Skills Development
- Digital Economy
- Transport & Logistics

Standing Subcommittees

National

- International Cooperation
- Governance and Public Administration

National/Provincial/Regional

- Food Security
- Labour Relations & Workplace Transformation
- Enterprise Development
- 4th Industrial Revolution
- Township Economy
- Early Childhood Development
- Finance and Fundraising
- Auditing
- Research and Content Development

Provincial/Regional

- Service Delivery Monitoring and Evaluations
- Gender Equality & LGBTI

Regional

- **Service Delivery Monitoring and Evaluations**
- Safety and Security
- Community Engagement

Explanatory Notes:

- ⇒ National Subcommittee is chaired by an NEC member appointed by the NEC. Provincial Subcommittee is chaired by an PEC member appointed by the PEC. Regional Subcommittee is chaired by an REC member appointed by the REC.
- ⇒ Each National Subcommittees is primarily composed of provincial chairs of a similar committee at provincial level and additional experts and professionals are co-opted through open invitation and concluded at the discretion of the Chairperson of the National Subcommittee. Similar logic applies to the composition of provincial subcommittees with regard to their relationship to regional subcommittees.
- ⇒ National Subcommittees that are not duplicated at provincial level are constituted through open invitation and at the discretion of the National Subcommittee chairperson. Similar logic applies to provincial subcommittees that are not duplicated at regional level.
- ⇒ Each Regional Subcommittees is constituted through open invitation and concluded at the discretion of the regional chairperson of the committee.